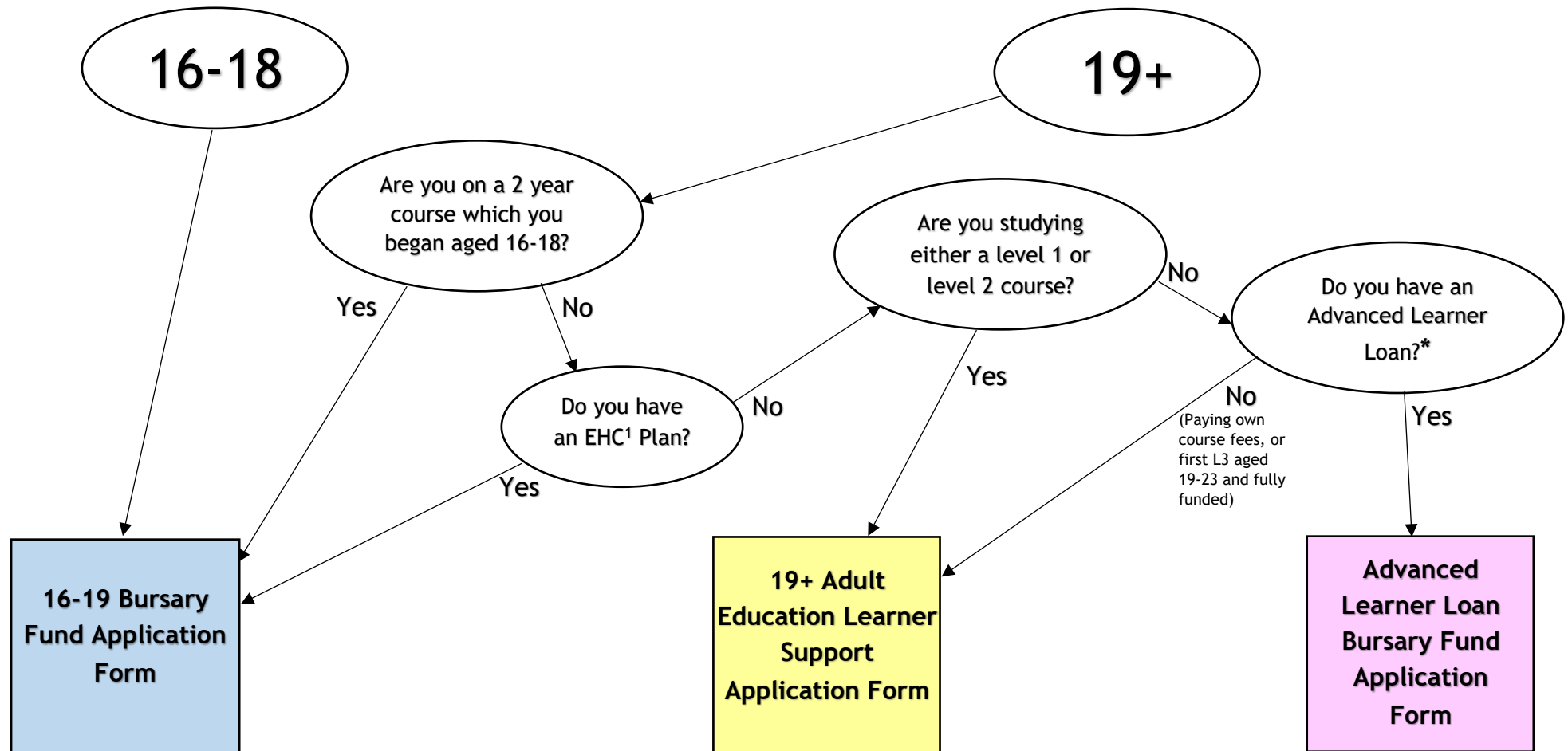




# Which Financial Support Application Form do you need to complete?

(Not available to those studying Higher Education (HE) courses or apprenticeships)

Start with your age on 31<sup>st</sup> August 2019



\*If on 31<sup>st</sup> August 2019 you are aged 24+ and studying an eligible level 3 or above course or are aged 19-23 studying a **second** eligible course at level 3 or above, you can apply for an Advanced Learner Loan from Student Finance England to help fund the course.