



Health and Social Care

14% of employment in the Humber is in Health & Social Care

Health care is about the treatment and support of medical conditions in hospital, health centres and in the community. It includes Dentists and Opticians. Social care is about the care and support of people within the community.

Will there be opportunities available?

■ The number of Health & Social Care jobs is predicted to grow to around 2.6million by 2025 nationally. The NHS remains the biggest employer in the UK and the 5th largest employer in the world, employing over 1.7 million people.

■ An additional 174,000 social care workers will be needed across Yorkshire & Humber by 2035 to meet predicted demands, and Hull York Medical School will train an extra 90 doctors per year from 2019 to meet the demands of the NHS.

Did You Know?

■ Around 20% of the workforce in the Humber is aged 55 or over but only 12% of workers are under 25 years old. New employees will be required by the sector to meet demand in the future.

■ 16% of Adult Health & Social Care workers in the Humber are male and 84% are female, showing that men are under-represented in this sector.

■ Nearly all Health and Social Care organisations offer apprenticeships.

■ Due to an ageing population Health & Social Care is one of the fastest growing sectors in the UK with 7,200 vacancies at any given time across the Yorkshire & Humber region. Over 50,000 people are employed in the sector in the Humber.



Types of Job	National Average Salary
Social Worker	£24,000 to £40,500
Care Home Assistant	£12,500 to £25,000
Residential Home Manager	£20,000 to £54,000
Pharmacist	£30,500 to £45,000
Midwife	£24,214 to £43,772
Dental Nurse	£18,813 to £30,112
Doctor (GP)	£37,191 to £87,003
Medical Secretary	£16,500 to £27,000
Occupational Therapist	£24,214 to £43,772
Physiotherapist	£24,214 to £43,772
Podiatrist	£24,214 to £37,267

Skills/qualities

- Communication
- Sense of responsibility
- Good timekeeping and organisational skills
- Team work
- Empathy and compassion

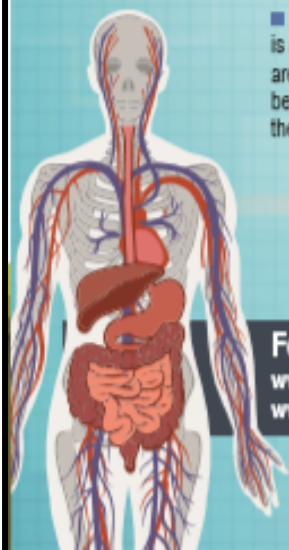
Useful subjects include

- English
- Maths
- IT
- Science

Some local employers

NHS
HICA Group
Relate
Busy Bees Childcare
Dove House Hospice
Spire Healthcare
Sue Ryder Care
City Health Care Partnership
Oasis

Sources: Business Register Employment Survey, Annual Survey of Hours and Earnings, Office for National Statistics.



For information... www.nationalcareersservicedirect.gov.uk www.lmhumber.co.uk www.careersyandh.co.uk www.ukhca.co.uk
www.bridgingthegaphumber.co.uk www.apprenticeships.org.uk www.allaboutcareers.com www.stepintothenhs.nhs.uk www.caringcareers.gov.uk
www.skillsforcare.org.uk www.deliveringyourfuture.co.uk www.healthcareers.nhs.uk www.hcpc-uk.org www.communitycare.co.uk